

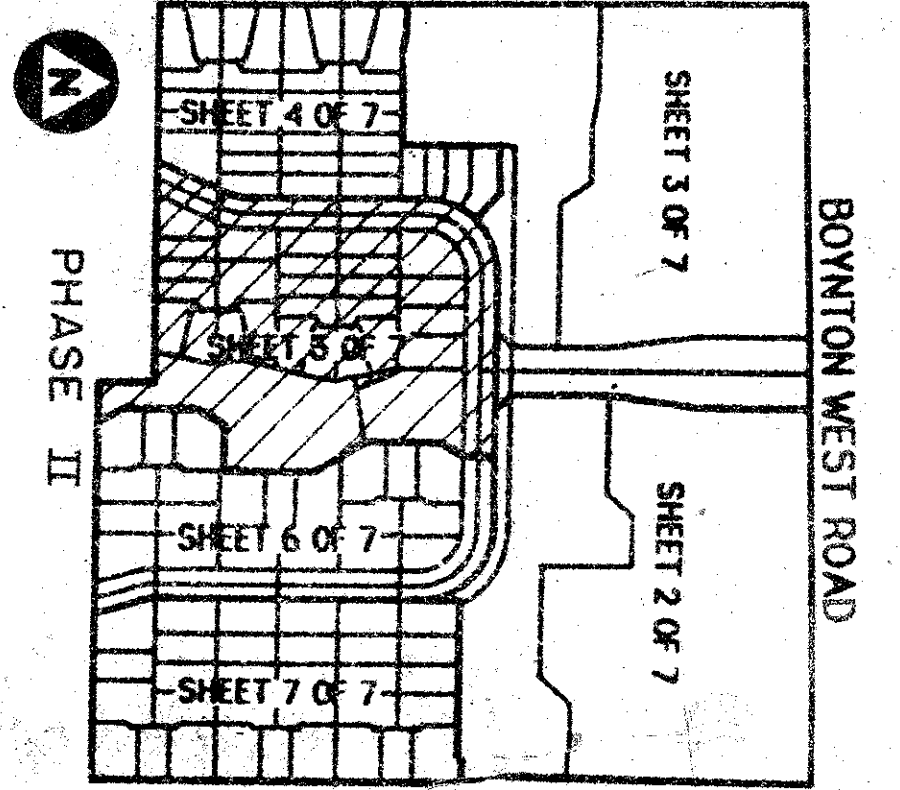
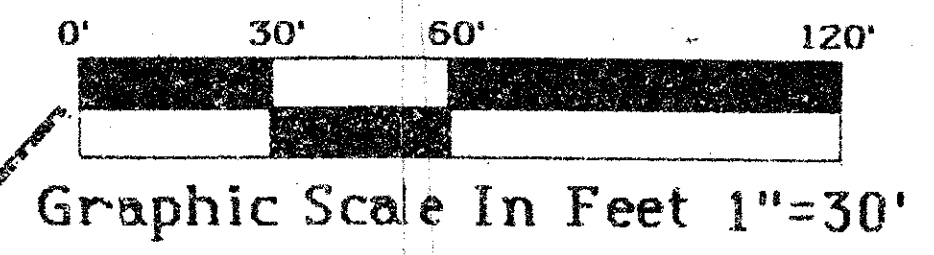
# GREATER BOYNTON PLACE

-A Part Of Sun Valley, A Planned Unit Development, Lying In Section 26, Township 45 South, Range 42 East-  
Being A Replat Of Portions Of Tracts 45 Through 48, Inclusive, Subdivision Of Section 26, Plat Book 6, Page 26, Public Records Of Palm Beach County, Florida  
March, A. D., Nineteen Hundred Eighty Seven

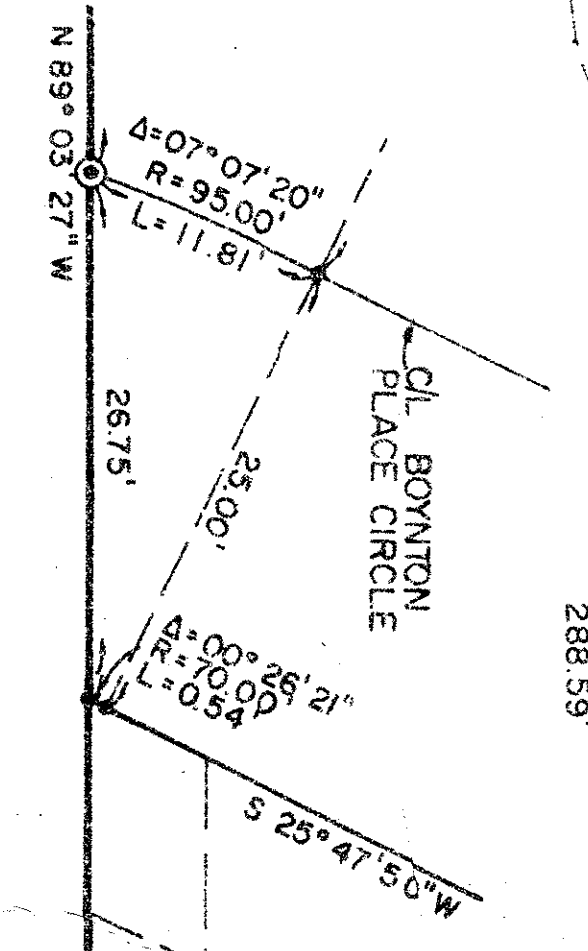
State of Florida )  
County of Palm Beach )  
This Plat was filed for record  
at \_\_\_\_\_ this \_\_\_\_\_ day of  
A. D., 1987, and  
duly recorded in Plat Book  
\_\_\_\_\_ on Pages \_\_\_\_\_  
John S. Dunkle,  
Clerk of the Circuit Court.  
By: \_\_\_\_\_  
Deputy Clerk

Match Line  
See Sheet 4 Of 7

Match Line  
See Sheet 4 Of 7



SEE DETAIL THIS SHEET



DETAIL  
N.T.S.

Subdivision Of Section 26  
(P. 5, 6, 7, 26)

Match Line  
See Sheet 6 Of 7

Match Line  
See Sheet 3 of 7

TYPICAL DETAIL  
(Not To Scale)

Legend:

- ⊕ Denotes a permanent reference monument (P.R.M.)
- ⊙ Denotes a permanent control point (P.C.P.)
- D.E. Denotes a drainage easement.
- U.E. Denotes a utility easement.
- L.O.E. Denotes a limited access easement.
- L.M.E. Denotes a limited maintenance easement.
- A.U. & D.E. Denotes a utility and drainage easement.

**Note:**

Ownership of lots in this portion of Greater Boynton Place is subject to the provisions of the Declaration Of Restrictive Covenants Of The Courts At Boynton Place, including the provisions of The Courts At Boynton Place Sub-Association, Inc., a Florida non-profit corporation, and the by-laws thereof.

Subdivision of Greater Boynton Place  
BOOK 57 PAGE 140  
FLOOD MAP # 190 B  
ZONING RS 33437  
SQ PUD  
ZIP CODE 33437

ADD. BY  
CHECKED BY

0498-004

This instrument was prepared by Wm. R. Van Campen, C.L.S.,  
in and for the office of Bench Mark Land Surveying and  
Mapping, Inc., 4152 West Blue Heron Boulevard, Suite 121,  
Briarwater Beach, Florida, 33404. Phone: (305) 448-2102

GREATER BOYNTON PLACE 57/140